



FLOOR PLANS

VILLAS

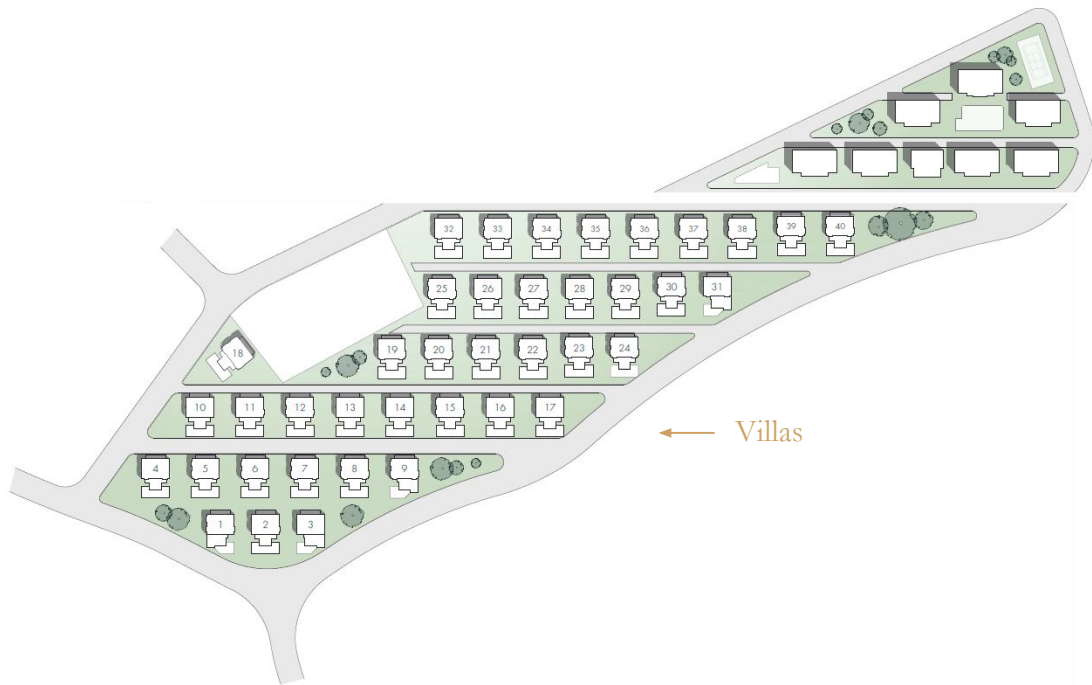
VILLA

338 m²

338 m² - villa square meter without pool and adjacent territory

The pool 35-45 m², with terrace and recreation area

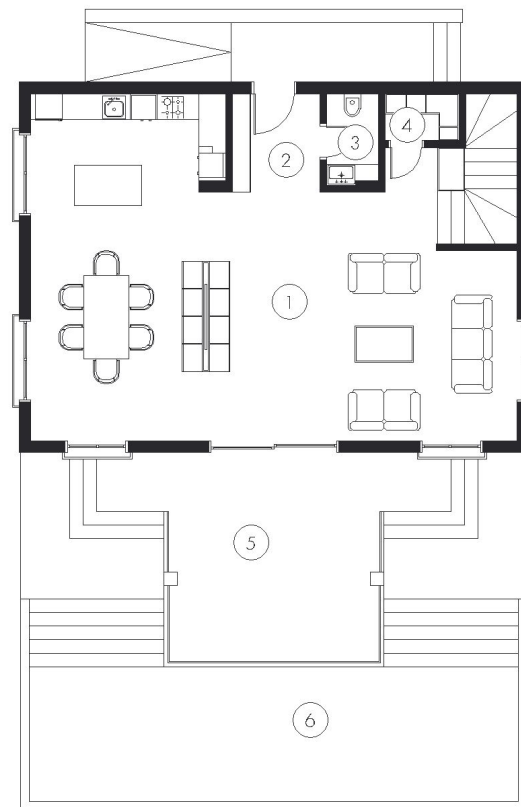
Land plots starting from 335 m² to 754 m²



1 FLOOR

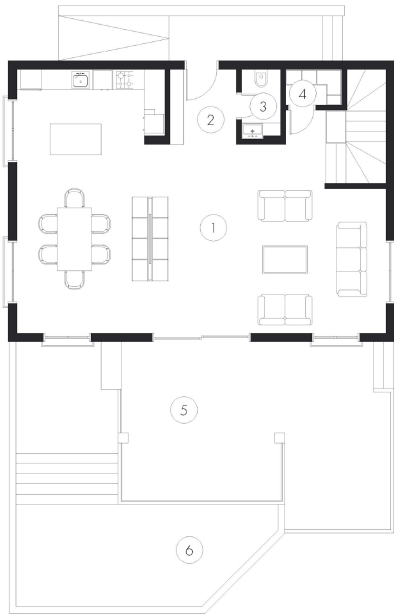
148.39 m²

1. LIVING / KITCHEN	70.15 sq. m
2. ENTRANCE	4.4 sq. m
3. BATHROOM	2.52 sq. m
4. STOREROOM	2 sq. m
5. TERRACE WITH POOL ACCESS	25.5 sq. m
- STAIRS	9.5 sq. m
- WALLS	9.5 sq. m
- COMMON AREAS	24.82 sq. m
<hr/>	
6. SWIMMING POOL	35-45 sq. m

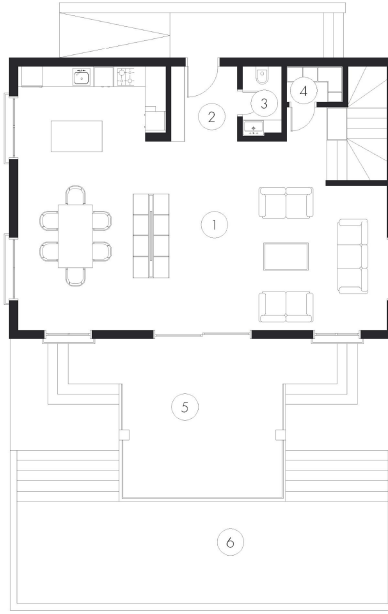


1 FLOOR. Pool types

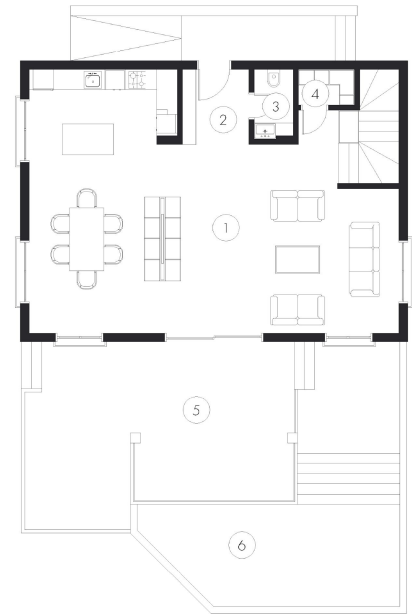
Left-sided



Central



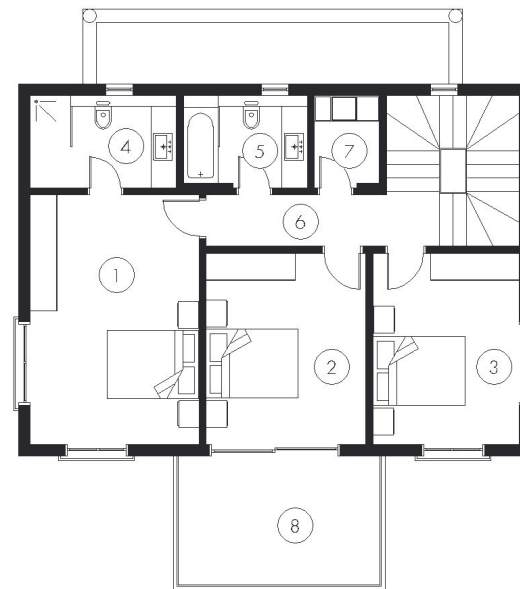
Right-sided



2 FLOOR

107.47 m²

1. BEDROOM	21.28 sq. m
2. BEDROOM	15.5 sq. m
3. BEDROOM	14.2 sq. m
4. BATHROOM	6,93 sq. m
5. BATHROOM	5,67 sq. m
6. HALL	6,9 sq. m
7. LAUNDRY ROOM	5,37 sq. m
8. SUNSET TERRACE	14 sq. m
- STAIRS	9,5 sq. m
- WALLS	8,12 sq. m



3 FLOOR

82.46 m²

FREE PLANNING AREA WITH
PANORAMIC WINDOWS

75.5 sq. m

WALLS

6.96 sq. m

